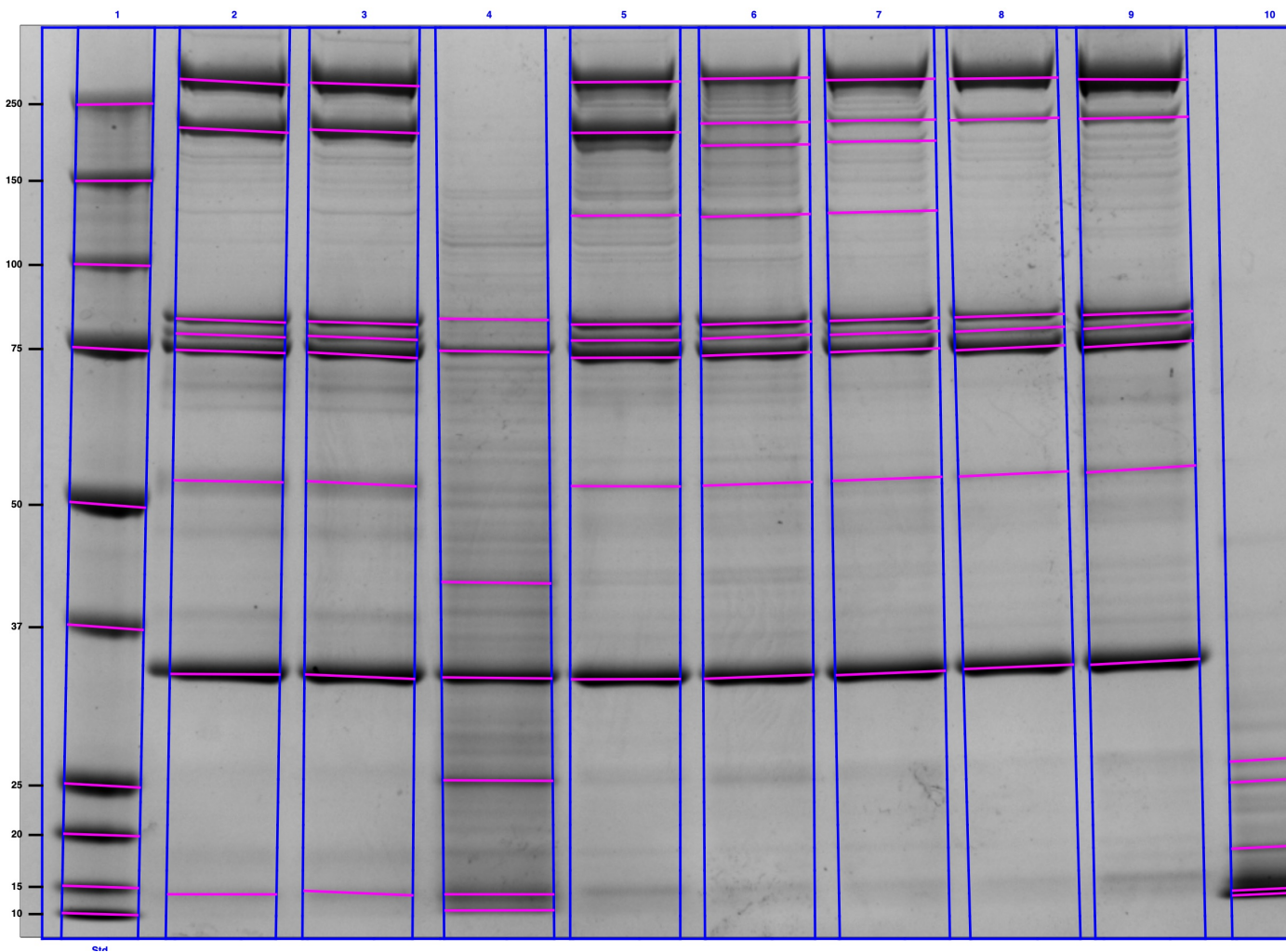


Image Report: 30.06.23 e1 f1 g1 h1 ctr2



/Users/ceciliarudelli/Desktop/DOTTORATO/progettoPOLLINE/settimana1.30-06/gel/30.06.23 e1 f1 g1 h1 ctr2.scn

Acquisition Information

Imager	ChemiDoc MP
Exposure Time (sec)	6.892 (Auto - Intense Bands)
Flat Field	Applied (White)
Serial Number	731BR02881
Software Version	5.2.1
Application	Coomassie Blue
Excitation Source	White Trans illumination
Emission Filter	Standard Filter

Image Information

Acquisition Date	17/7/2023 9:51:54 AM
User Name	FisioLab
Image Area (mm)	X: 74.3 Y: 50.3
Pixel Size (µm)	X: 68.2 Y: 68.2
Data Range (Int)	13981 - 59962

Analysis Settings

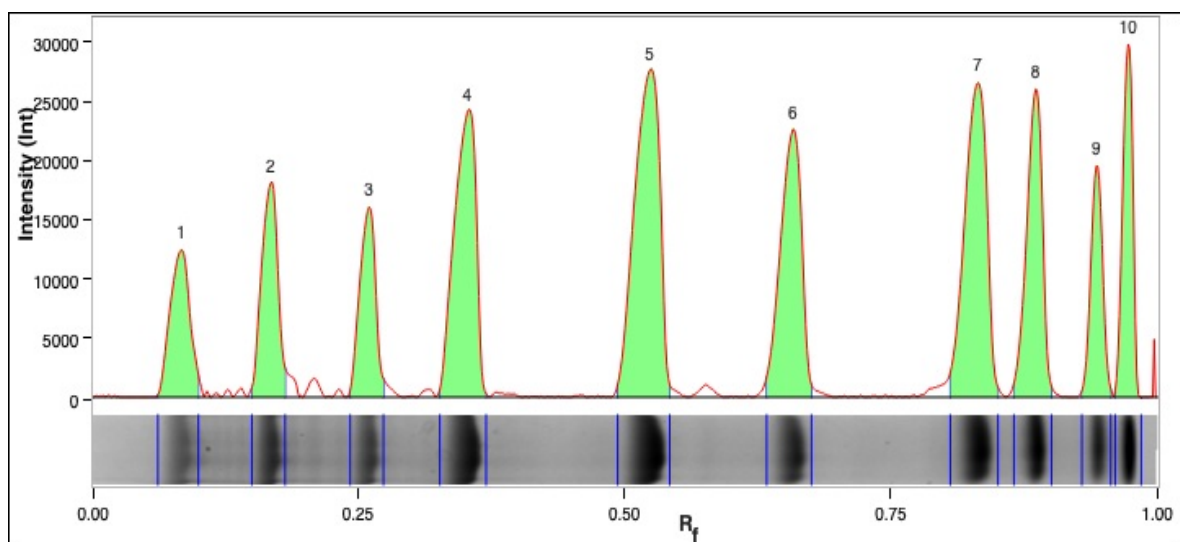
Detection	<p>Lane detection: Manually created lanes</p> <p>Band detection: Automatically detected bands with sensitivity: Low Manually adjusted bands</p> <p>Lane Background Subtraction: Lane background subtracted with disk size: 0.1</p> <p>Lane width: Variable</p>
Mol. Weight Analysis	<p>Standard: Bio-Rad Precision Plus</p> <p>Standard lanes: first</p> <p>Regression method: Point to Point (semi-log)</p>

Lane Statistics

Lane No.	Adj. Total Band Vol. (Int)	Total Band Vol. (Int)	Adj. Total Lane Vol. (Int)	Total Lane Vol. (Int)	Bkgd. Vol. (Int)	Norm. Factor
1	216.196.294	645.086.316	224.257.224	1.320.700.936	1.096.443.712	N/A
2	171.195.327	527.476.478	194.754.784	1.677.809.399	1.483.054.615	N/A
3	176.652.985	543.169.492	208.512.760	1.754.839.878	1.546.327.118	N/A
4	64.612.754	320.762.586	98.737.401	1.805.081.446	1.706.344.045	N/A
5	138.658.351	534.005.251	162.523.345	1.776.267.073	1.613.743.728	N/A
6	110.463.863	440.179.137	132.943.216	1.703.564.664	1.570.621.448	N/A
7	128.681.362	450.692.529	147.952.710	1.618.505.673	1.470.552.963	N/A
8	138.249.129	414.073.212	157.966.812	1.559.261.132	1.401.294.320	N/A
9	158.879.952	495.589.647	190.325.076	1.691.131.453	1.500.806.377	N/A
10	64.865.069	234.249.157	77.795.879	1.435.710.531	1.357.914.652	N/A

Lane And Band Analysis

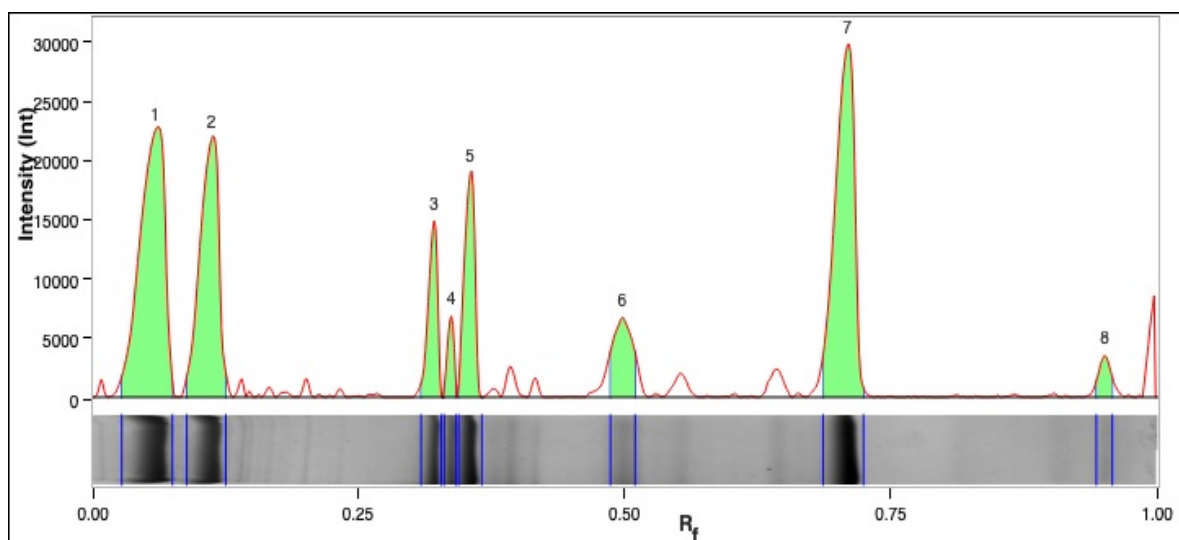
Lane 1 - Bio-Rad Precision Plus



Band No.	Band Label	Mol. Wt. (KDa)	Relative Front	Adj. Volume (Int)	Volume (Int)	Abs. Quant.	Rel. Quant.	Band %	Lane %
1		250,0	0,084	13.134.390	57.617.220	N/A	N/A	6,1	5,9
2		150,0	0,168	15.855.694	56.224.390	N/A	N/A	7,3	7,1
3		100,0	0,261	13.588.850	52.703.658	N/A	N/A	6,3	6,1
4		75,0	0,353	28.301.698	80.320.256	N/A	N/A	13,1	12,6
5		50,0	0,524	37.679.198	91.817.164	N/A	N/A	17,4	16,8
6		37,0	0,658	25.528.934	70.602.748	N/A	N/A	11,8	11,4
7		25,0	0,832	31.458.676	81.824.500	N/A	N/A	14,6	14,0
8		20,0	0,886	21.944.652	63.162.500	N/A	N/A	10,2	9,8
9		15,0	0,943	12.450.158	46.480.780	N/A	N/A	5,8	5,6
10		10,0	0,973	16.254.044	44.333.100	N/A	N/A	7,5	7,2

Band Detection	Automatically detected bands with sensitivity: Low
Lane Background	Lane background subtracted with disk size: 0.1
Lane Width	4.23 mm
Regression Equation	A single equation is not available for this method

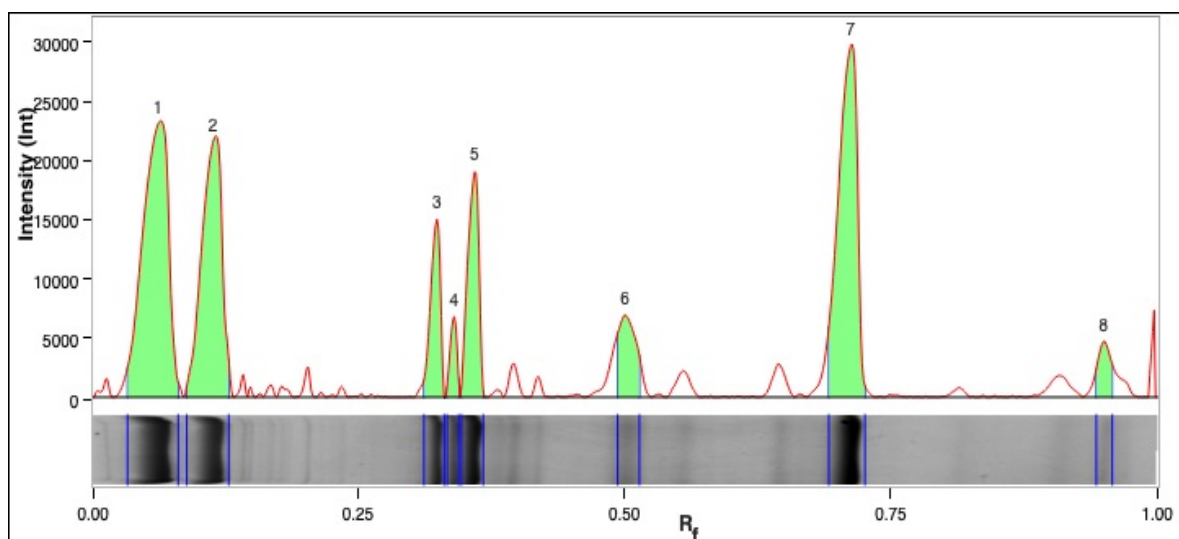
Lane 2



Band No.	Band Label	Mol. Wt. (KDa)	Relative Front	Adj. Volume (Int)	Volume (Int)	Abs. Quant.	Rel. Quant.	Band %	Lane %
1		250,0	0,060	46.551.806	120.542.401	N/A	N/A	27,2	23,9
2		210,3	0,113	33.995.419	92.282.231	N/A	N/A	19,9	17,5
3		82,7	0,322	11.012.771	46.734.968	N/A	N/A	6,4	5,7
4		78,6	0,338	3.767.637	29.811.796	N/A	N/A	2,2	1,9
5		74,5	0,355	16.336.840	60.764.750	N/A	N/A	9,5	8,4
6		53,2	0,498	9.865.383	46.102.801	N/A	N/A	5,8	5,1
7		32,9	0,710	46.387.245	101.533.425	N/A	N/A	27,1	23,8
8		13,4	0,951	3.278.226	29.704.106	N/A	N/A	1,9	1,7

Band Detection	Automatically detected bands with sensitivity: Low
Lane Background	Lane background subtracted with disk size: 0.1
Lane Width	6.07 mm
Regression Equation	A single equation is not available for this method

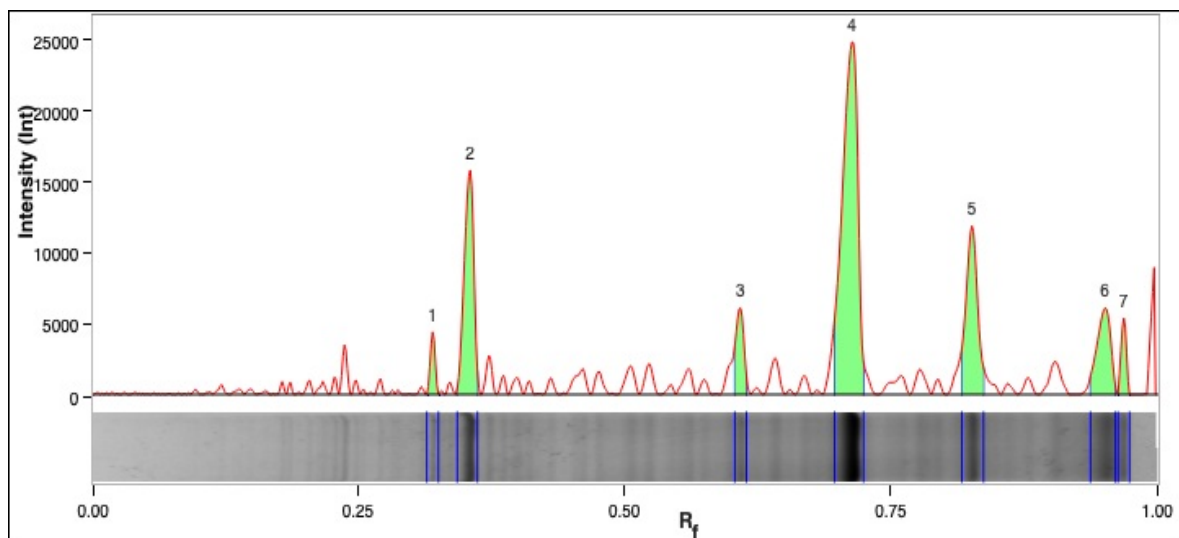
Lane 3



Band No.	Band Label	Mol. Wt. (KDa)	Relative Front	Adj. Volume (Int)	Volume (Int)	Abs. Quant.	Rel. Quant.	Band %	Lane %
1		250,0	0,062	48.726.610	124.662.567	N/A	N/A	27,6	23,4
2		208,6	0,114	36.548.562	102.327.305	N/A	N/A	20,7	17,5
3		82,0	0,324	11.768.559	50.146.694	N/A	N/A	6,7	5,6
4		77,9	0,341	3.814.184	31.948.508	N/A	N/A	2,2	1,8
5		73,8	0,360	17.297.328	65.493.587	N/A	N/A	9,8	8,3
6		52,8	0,501	9.066.341	43.157.702	N/A	N/A	5,1	4,3
7		32,7	0,712	45.116.770	99.057.712	N/A	N/A	25,5	21,6
8		13,7	0,950	4.314.631	26.375.417	N/A	N/A	2,4	2,1

Band Detection	Automatically detected bands with sensitivity: Low
Lane Background	Lane background subtracted with disk size: 0.1
Lane Width	6.07 mm
Regression Equation	A single equation is not available for this method

Lane 4

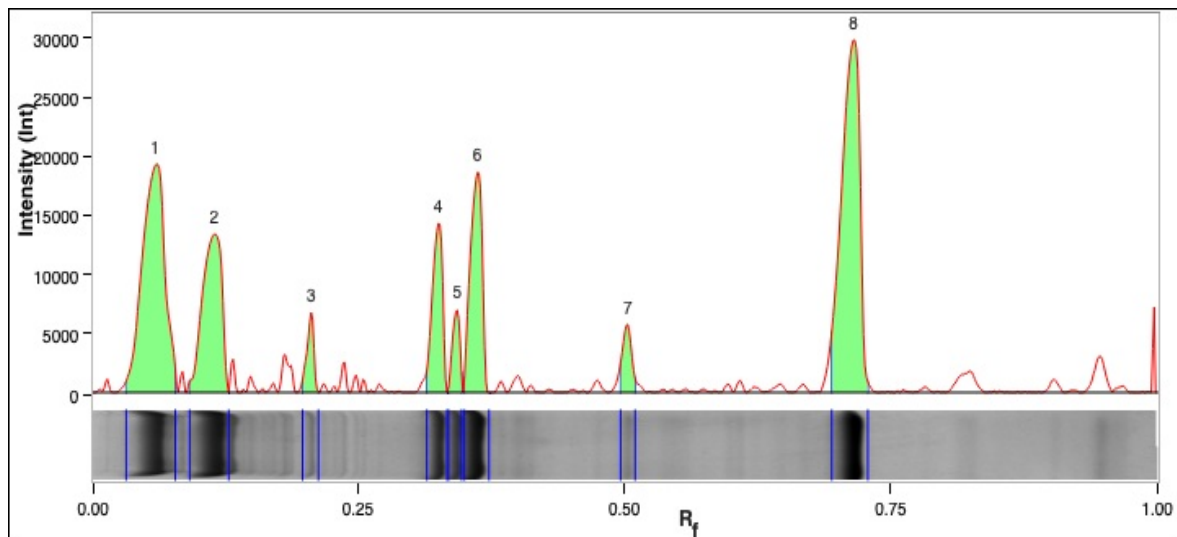


Band No.	Band Label	Mol. Wt. (KDa)	Relative Front	Adj. Volume (Int)	Volume (Int)	Abs. Quant.	Rel. Quant.	Band %	Lane %
1		83,0	0,320	1.635.375	23.646.944	N/A	N/A	2,5	1,7
2		74,5	0,355	11.627.583	50.806.807	N/A	N/A	18,0	11,8
3		41,3	0,609	3.439.761	26.508.294	N/A	N/A	5,3	3,5
4		32,6	0,714	29.206.418	83.364.164	N/A	N/A	45,2	29,6
5		25,3	0,826	10.200.646	49.599.166	N/A	N/A	15,8	10,3
6		13,4	0,951	6.298.530	57.796.778	N/A	N/A	9,7	6,4
7		10,6	0,969	2.204.441	29.040.433	N/A	N/A	3,4	2,2

Band Detection	Automatically detected bands with sensitivity: Low
----------------	--

Lane Background	Lane background subtracted with disk size: 0.1
Lane Width	6.07 mm
Regression Equation	A single equation is not available for this method

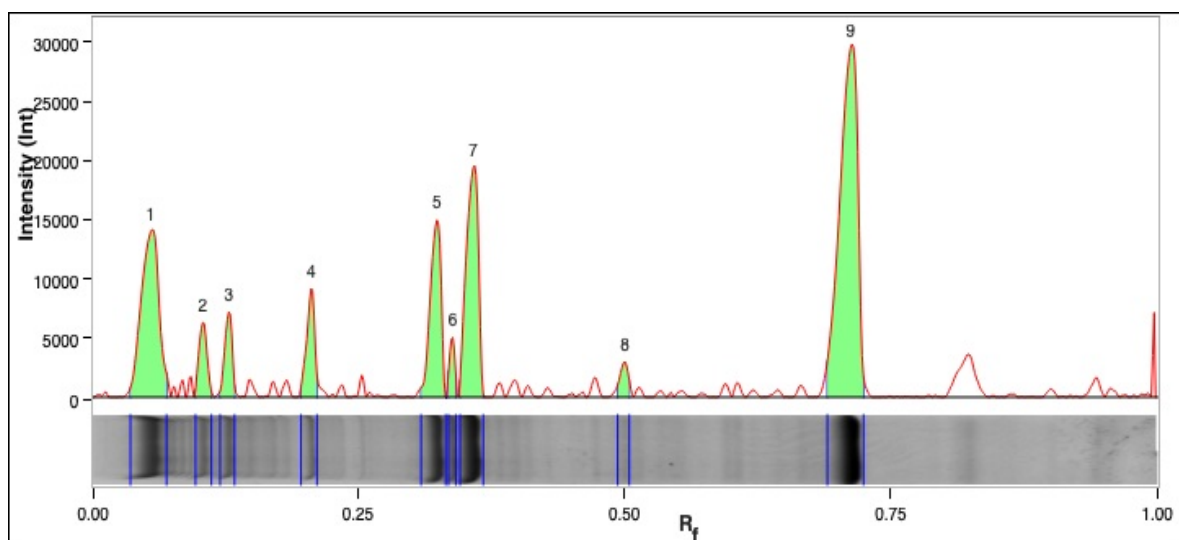
Lane 5



Band No.	Band Label	Mol. Wt. (KDa)	Relative Front	Adj. Volume (Int)	Volume (Int)	Abs. Quant.	Rel. Quant.	Band %	Lane %
1		250,0	0,060	34.831.752	118.038.386	N/A	N/A	25,1	21,4
2		206,8	0,115	20.769.396	107.619.156	N/A	N/A	15,0	12,8
3		126,9	0,206	3.573.261	27.405.503	N/A	N/A	2,6	2,2
4		81,6	0,326	11.429.736	51.414.499	N/A	N/A	8,2	7,0
5		77,3	0,343	4.135.741	36.958.051	N/A	N/A	3,0	2,5
6		73,3	0,362	17.425.399	71.816.236	N/A	N/A	12,6	10,7
7		52,5	0,503	3.862.155	24.560.529	N/A	N/A	2,8	2,4
8		32,5	0,715	42.630.911	96.192.891	N/A	N/A	30,7	26,2

Band Detection	Automatically detected bands with sensitivity: Low
Lane Background	Lane background subtracted with disk size: 0.1
Lane Width	6.07 mm
Regression Equation	A single equation is not available for this method

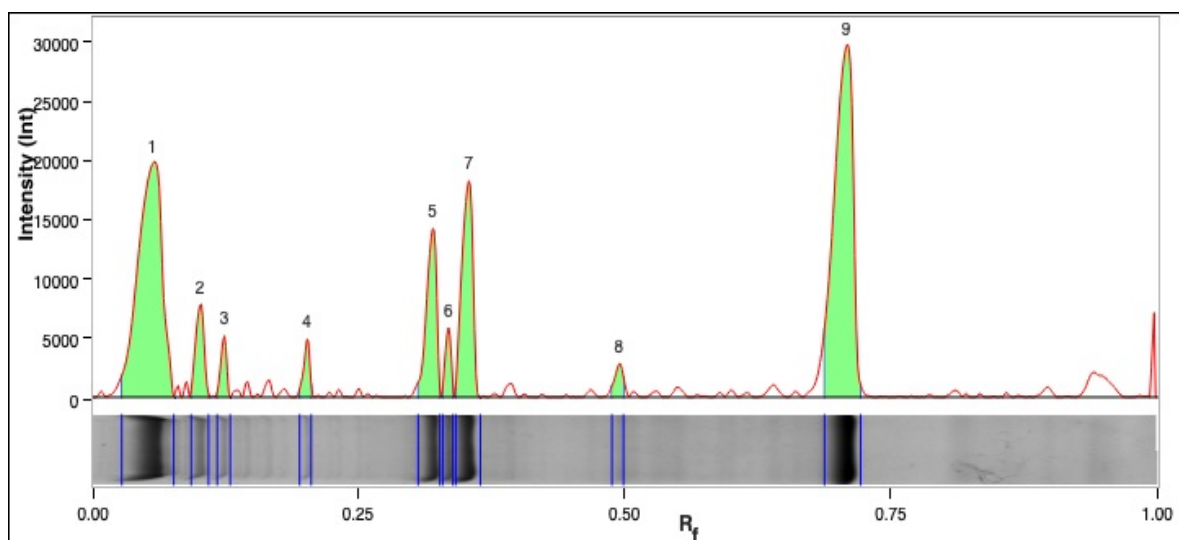
Lane 6



Band No.	Band Label	Mol. Wt. (KDa)	Relative Front	Adj. Volume (Int)	Volume (Int)	Abs. Quant.	Rel. Quant.	Band %	Lane %
1		250,0	0,056	19.546.714	80.015.005	N/A	N/A	17,7	14,7
2		220,9	0,104	4.070.059	33.486.517	N/A	N/A	3,7	3,1
3		190,5	0,129	4.243.075	33.743.460	N/A	N/A	3,8	3,2
4		126,9	0,206	5.796.659	31.221.289	N/A	N/A	5,2	4,4
5		82,0	0,324	12.526.572	58.101.603	N/A	N/A	11,3	9,4
6		78,2	0,339	2.123.896	19.917.577	N/A	N/A	1,9	1,6
7		74,0	0,358	18.529.711	66.254.359	N/A	N/A	16,8	13,9
8		52,8	0,501	1.867.487	21.279.010	N/A	N/A	1,7	1,4
9		32,7	0,712	41.759.690	96.160.317	N/A	N/A	37,8	31,4

Band Detection	Automatically detected bands with sensitivity: Low
Lane Background	Lane background subtracted with disk size: 0.1
Lane Width	6.07 mm
Regression Equation	A single equation is not available for this method

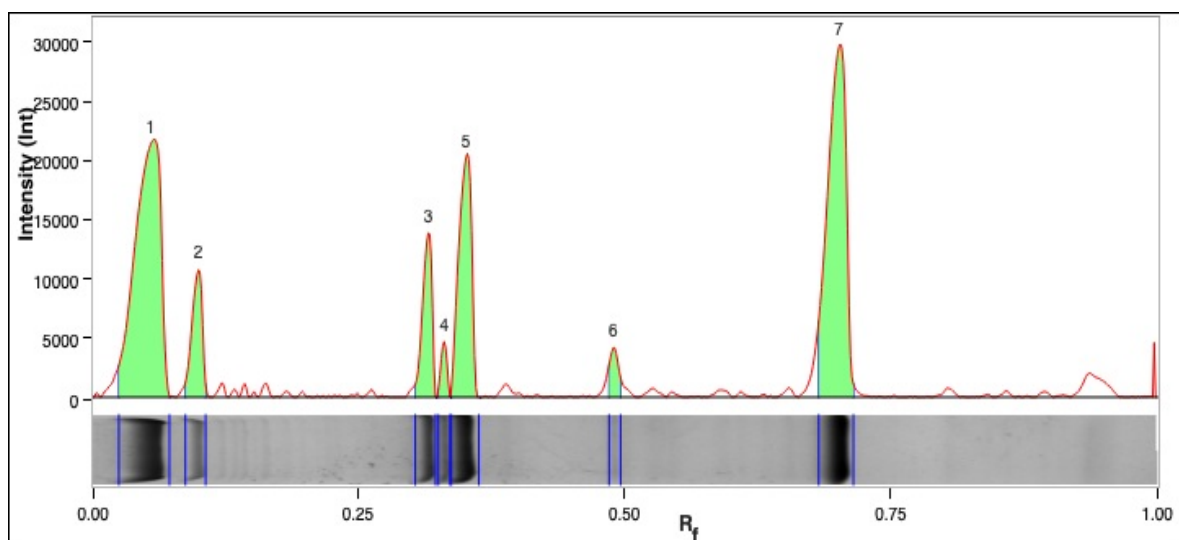
Lane 7



Band No.	Band Label	Mol. Wt. (KDa)	Relative Front	Adj. Volume (Int)	Volume (Int)	Abs. Quant.	Rel. Quant.	Band %	Lane %
1		250,0	0,057	39.688.126	117.268.358	N/A	N/A	30,8	26,8
2		224,6	0,102	5.534.020	35.039.923	N/A	N/A	4,3	3,7
3		195,3	0,125	2.478.294	22.392.667	N/A	N/A	1,9	1,7
4		129,2	0,202	2.458.625	20.782.924	N/A	N/A	1,9	1,7
5		83,0	0,320	11.715.960	49.354.861	N/A	N/A	9,1	7,9
6		79,2	0,335	2.876.302	25.173.650	N/A	N/A	2,2	1,9
7		74,8	0,354	16.562.633	60.709.214	N/A	N/A	12,9	11,2
8		53,5	0,495	1.966.811	22.919.191	N/A	N/A	1,5	1,3
9		33,0	0,708	45.400.591	97.051.741	N/A	N/A	35,3	30,7

Band Detection	Automatically detected bands with sensitivity: Low
Lane Background	Lane background subtracted with disk size: 0.1
Lane Width	6.07 mm
Regression Equation	A single equation is not available for this method

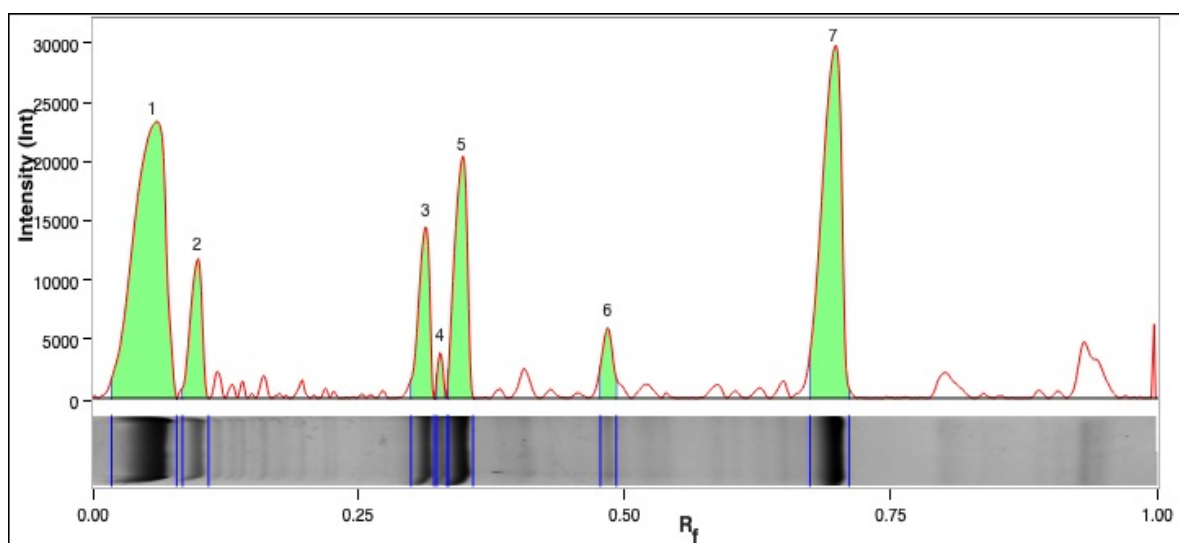
Lane 8



Band No.	Band Label	Mol. Wt. (KDa)	Relative Front	Adj. Volume (Int)	Volume (Int)	Abs. Quant.	Rel. Quant.	Band %	Lane %
1		250,0	0,056	46.409.139	118.351.310	N/A	N/A	33,6	29,4
2		226,5	0,100	9.316.431	39.823.228	N/A	N/A	6,7	5,9
3		84,1	0,316	10.751.467	45.763.177	N/A	N/A	7,8	6,8
4		80,3	0,331	2.362.238	28.335.909	N/A	N/A	1,7	1,5
5		75,3	0,351	21.842.469	72.166.896	N/A	N/A	15,8	13,8
6		54,2	0,490	2.671.602	17.861.677	N/A	N/A	1,9	1,7
7		33,5	0,701	44.895.783	91.771.015	N/A	N/A	32,5	28,4

Band Detection	Automatically detected bands with sensitivity: Low
Lane Background	Lane background subtracted with disk size: 0.1
Lane Width	6.07 mm
Regression Equation	A single equation is not available for this method

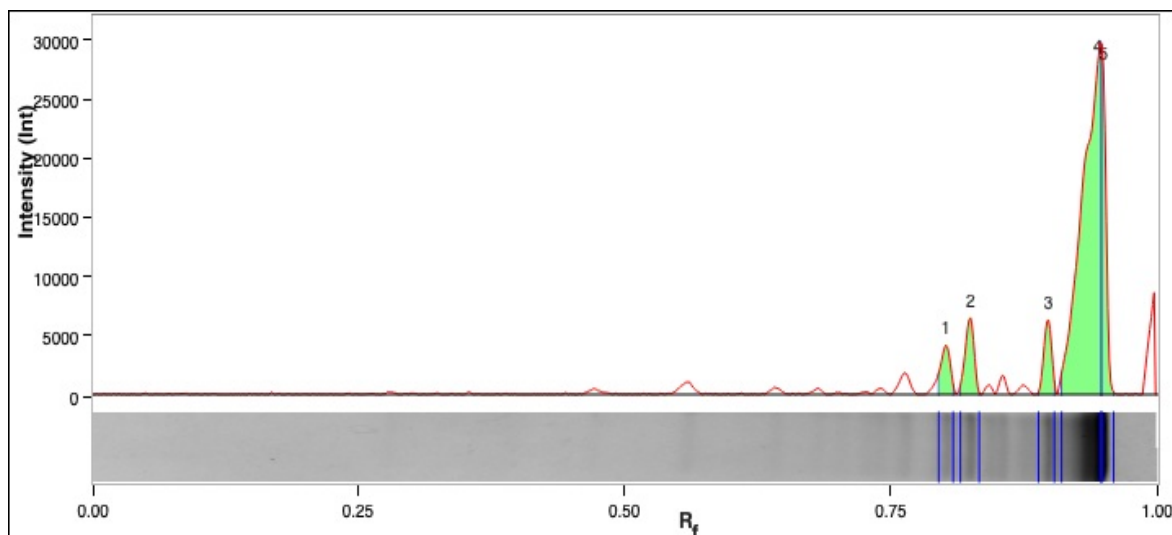
Lane 9



Band No.	Band Label	Mol. Wt. (KDa)	Relative Front	Adj. Volume (Int)	Volume (Int)	Abs. Quant.	Rel. Quant.	Band %	Lane %
1		250,0	0,057	60.717.580	159.419.826	N/A	N/A	38,2	31,9
2		228,3	0,099	11.128.649	51.324.698	N/A	N/A	7,0	5,8
3		84,8	0,313	12.723.351	55.926.087	N/A	N/A	8,0	6,7
4		81,3	0,327	1.748.939	26.854.593	N/A	N/A	1,1	0,9
5		76,3	0,347	21.013.701	71.159.416	N/A	N/A	13,2	11,0
6		54,9	0,484	4.740.585	27.358.422	N/A	N/A	3,0	2,5
7		34,0	0,696	46.807.147	103.546.605	N/A	N/A	29,5	24,6

Band Detection	Automatically detected bands with sensitivity: Low
Lane Background	Lane background subtracted with disk size: 0.1
Lane Width	6.07 mm
Regression Equation	A single equation is not available for this method

Lane 10



Band No.	Band Label	Mol. Wt. (KDa)	Relative Front	Adj. Volume (Int)	Volume (Int)	Abs. Quant.	Rel. Quant.	Band %	Lane %
1		26,7	0,802	2.925.786	24.411.187	N/A	N/A	4,5	3,8
2		25,4	0,825	4.640.638	35.291.882	N/A	N/A	7,2	6,0
3		18,8	0,898	3.999.749	34.398.500	N/A	N/A	6,2	5,1
4		14,7	0,944	42.745.187	110.447.131	N/A	N/A	65,9	54,9
5		13,7	0,950	10.553.709	29.700.457	N/A	N/A	16,3	13,6

Band Detection	Automatically detected bands with sensitivity: Low
Lane Background	Lane background subtracted with disk size: 0.1
Lane Width	6.07 mm
Regression Equation	A single equation is not available for this method